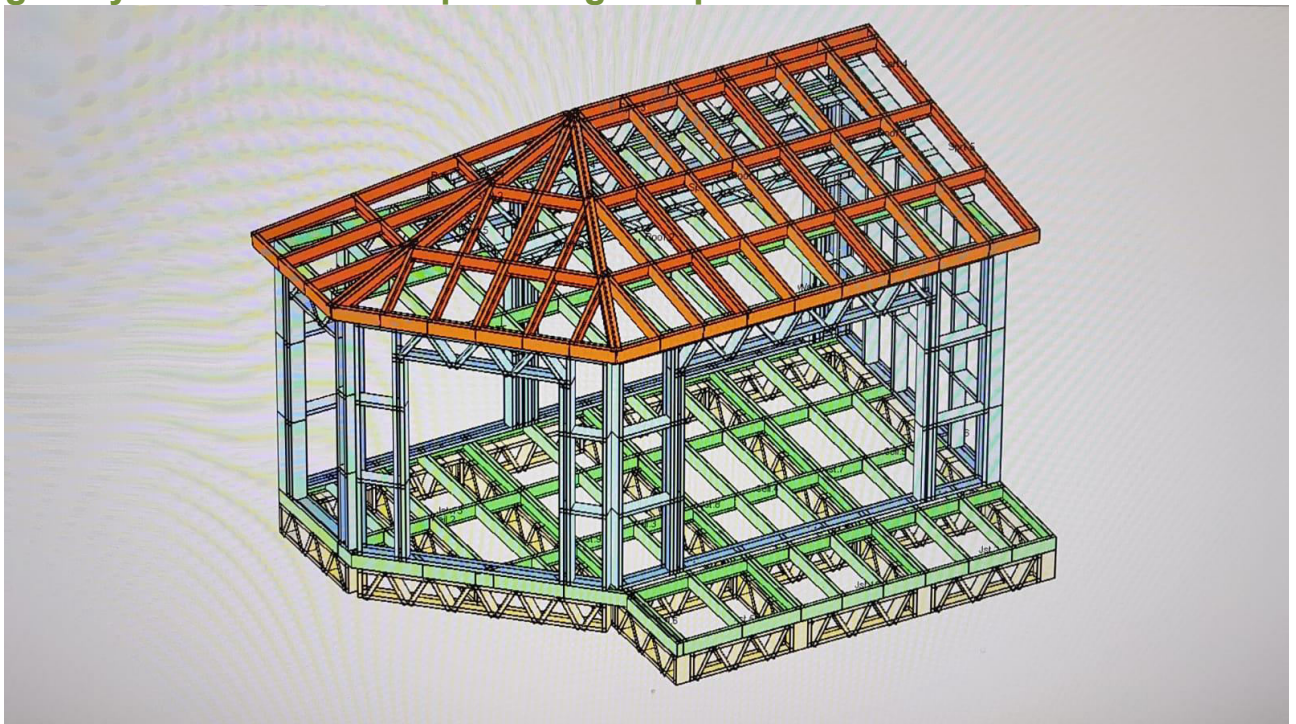


## BC SBS - Steel Bearing Structure



### A complete floor system

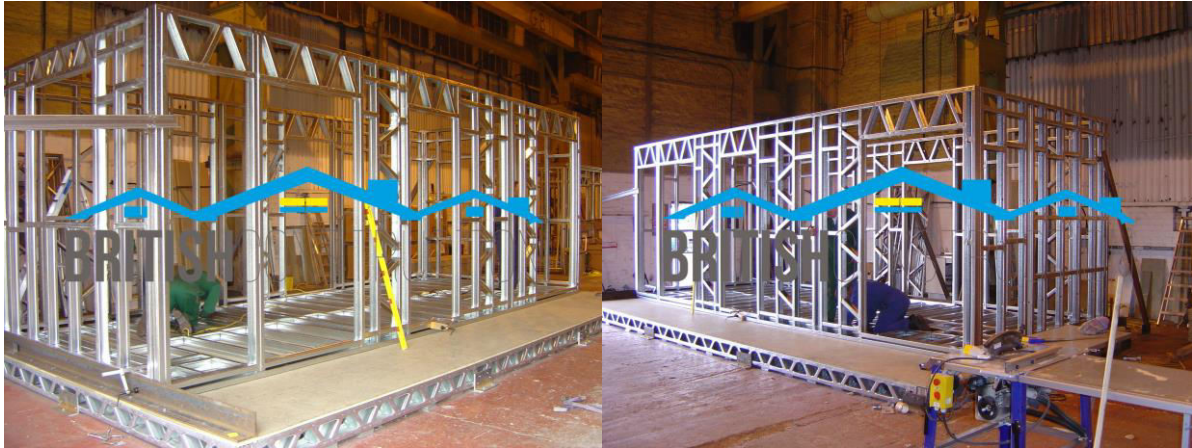
The BC Steel flooring system for elevated sub-floors is one of our core products and where we started as a specialist in floor systems. Not only is the flooring system a solid alternative to a slab on ground it works economically supporting anything from a lowset granny flat or kit home up to a highset pole house.



The three components that make up our floor system have each been designed to make your building process an easy one. The BC floor frame comes pre-cut as a kit, adjustable steel piers and sub-



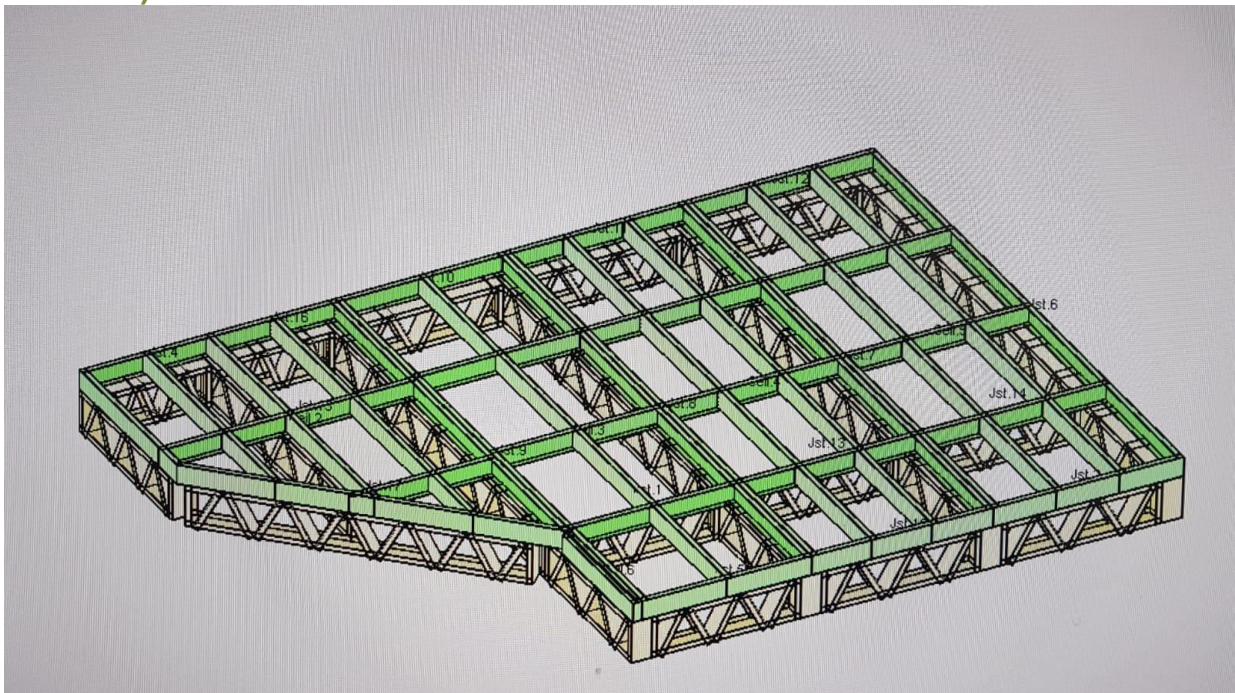
floor bracing make it to create the perfect platform on which to stand your house frame.



### Why raised floors?

Sloping sites can remain largely undisturbed – eliminates cutting, filling and compaction.

Easy under floor inspection (the safest termite prevention method)



Environmentally sound – silt runoff into waterways is reduced  
Reduces hidden cost of landscaping to repair site after building completion





## Why BC floors?

Beams are consistent in size giving you a very straight floor  
No shrinkage with BC therefore no squeaky floors, cracks in cornices or doors or windows that stick

Termite proof – used in conjunction with steel wall and roof framing, expensive termite prevention can be eliminated (check with your local authority).

## BC Smart Bearers

“No tape measure needed”



For most floor framing systems, the perimeter structure takes the most time to think through and build, but with BC Smart Bearers the install time is radically reduced.

Here's why: our Smart Bearers are;

Printed with bracket locations.

Pre-punched with location screw holes for each bracket.

Printed with joist numbers next to each joist bracket, which correlates with numbers on each joist. J1, J2, J3 etc.

### **“Smarter than the average bearer”**

Our internally developed computer aided design software ensures most of the information you require to easily assemble the floor frame is conveniently located on the perimeter bearers.

Bracket type and position, joist number – it’s all there! See how they’re made.



### **Perimeter ring beam – No blocking needed**

Smart Bearers also perform as a perimeter ring beam for the BC floor frame.

As a perimeter ring beam, bearers fully support external load-bearing walls including most point loads (i.e. from large residential door openings). This means theres no going back to add blocking or extra brackets to make sure above loads are transferred, like in other bearer and joist systems.